

Mouse Kdm6a Antibody (C-term)
Purified Rabbit Polyclonal Antibody (Pab)
Catalog # AP21225b**Specification**

Mouse Kdm6a Antibody (C-term) - Product Information

Application	WB,E
Primary Accession	O70546
Reactivity	Mouse
Host	Rabbit
Clonality	polyclonal
Isotype	Rabbit IgG
Calculated MW	154355

Mouse Kdm6a Antibody (C-term) - Additional Information**Gene ID** 22289**Other Names**

Lysine-specific demethylase 6A, 11411-, Histone demethylase UTX, Ubiquitously transcribed TPR protein on the X chromosome, Ubiquitously transcribed X chromosome tetratricopeptide repeat protein, Kdm6a, Utx

Target/Specificity

This mouse Kdm6a antibody is generated from a rabbit immunized with a KLH conjugated synthetic peptide between 1041-1074 amino acids from the C-terminal region of mouse Kdm6a.

Dilution

WB~~1:2000

E~~Use at an assay dependent concentration.

Format

Purified polyclonal antibody supplied in PBS with 0.09% (W/V) sodium azide. This antibody is purified through a protein A column, followed by peptide affinity purification.

Storage

Maintain refrigerated at 2-8°C for up to 2 weeks. For long term storage store at -20°C in small aliquots to prevent freeze-thaw cycles.

Precautions

Mouse Kdm6a Antibody (C-term) is for research use only and not for use in diagnostic or therapeutic procedures.

Mouse Kdm6a Antibody (C-term) - Protein Information**Name** Kdm6a**Synonyms** Utx

Function Histone demethylase that specifically demethylates 'Lys-27' of histone H3, thereby playing a central role in histone code. Demethylates trimethylated and dimethylated but not monomethylated H3 'Lys-27'. Plays a central role in regulation of posterior development, by regulating HOX gene expression. Demethylation of 'Lys-27' of histone H3 is concomitant with methylation of 'Lys-4' of histone H3, and regulates the recruitment of the PRC1 complex and monoubiquitination of histone H2A (By similarity). Plays a demethylase-independent role in chromatin remodeling to regulate T-box family member-dependent gene expression (PubMed:[21095589](#)).

Cellular Location

Nucleus.

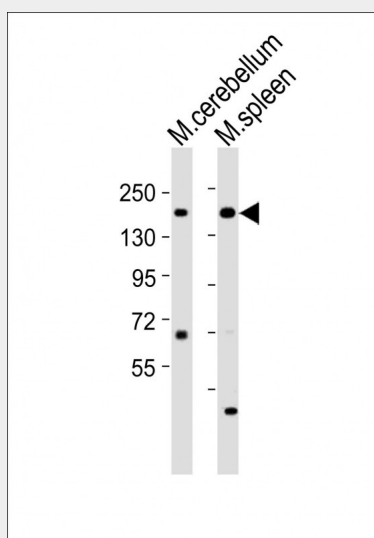
Tissue Location

Expressed in brain, heart and spleen.

Mouse Kdm6a Antibody (C-term) - Protocols

Provided below are standard protocols that you may find useful for product applications.

- [Western Blot](#)
- [Blocking Peptides](#)
- [Dot Blot](#)
- [Immunohistochemistry](#)
- [Immunofluorescence](#)
- [Immunoprecipitation](#)
- [Flow Cytometry](#)
- [Cell Culture](#)

Mouse Kdm6a Antibody (C-term) - Images

All lanes : Anti-Kdm6a Antibody (C-term) at 1:2000 dilution Lane 1: mouse cerebellum lysates Lane 2: mouse spleen lysates Lysates/proteins at 20 µg per lane. Secondary Goat Anti-Rabbit IgG, (H+L), Peroxidase conjugated at 1/10000 dilution Predicted band size : 154 kDa Blocking/Dilution buffer: 5% NFDM/TBST.

Mouse Kdm6a Antibody (C-term) - Background

Histone demethylase that specifically demethylates 'Lys- 27' of histone H3, thereby playing a central role in histone code. Demethylates trimethylated and dimethylated but not monomethylated H3 'Lys-27'. Plays a central role in regulation of posterior development, by regulating HOX gene expression. Demethylation of 'Lys-27' of histone H3 is concomitant with methylation of 'Lys-4' of histone H3, and regulates the recruitment of the PRC1 complex and monoubiquitination of histone H2A (By similarity).

Mouse Kdm6a Antibody (C-term) - References

Church D.M.,et al.PLoS Biol. 7:E1000112-E1000112(2009).
Greenfield A.,et al.Hum. Mol. Genet. 7:737-742(1998).
Grbavec D.,et al.Biochem. J. 337:13-17(1999).
Ballif B.A.,et al.Mol. Cell. Proteomics 3:1093-1101(2004).
Wang A.H.,et al.EMBO J. 32:1075-1086(2013).